

## Standard Preparation 500 mm Work Table

ITEM # \_\_\_\_\_

MODEL # \_\_\_\_\_

NAME # \_\_\_\_\_

SIS # \_\_\_\_\_

AIA # \_\_\_\_\_

**133214 (TG500MBN)**

Work table 500 mm

### Short Form Specification

**Item No.** \_\_\_\_\_

The 50mm high worktop in 304 AISI stainless steel, 1mm in thickness, has upturned edges and incorporates a layer of sound deadening, waterproof and fireproof material. Square section legs 40x40mm on 1" height-adjustable feet in 304 AISI stainless steel.

### Main Features

- Ideal for central positioning in the kitchen, either as island installation or back to back.

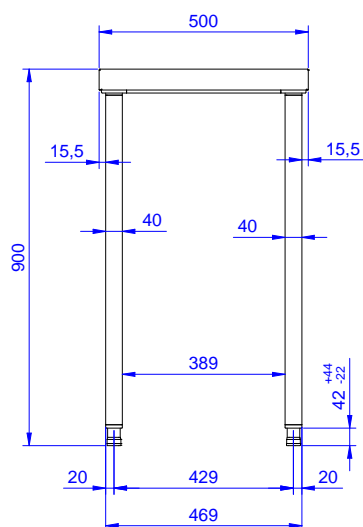
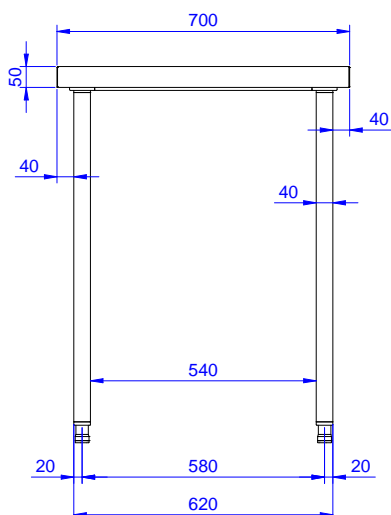
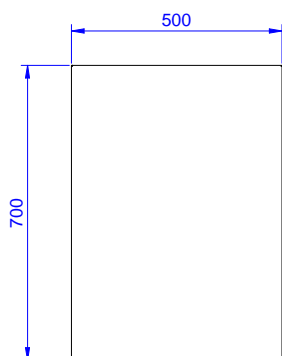
### Construction

- 50 mm worktop in 304 AISI stainless steel, 10/10 in thickness with upturned edges and reinforced waterproof underpanel, incorporates a layer of sound deadening materials.
- 400 or 600 mm wide single drawer, chest of 4 drawers, lower shelf, three-sided underframe and set of castors as alternative to the feet, can be fitted as optional on all work tables.
- 40 mm-thick lower shelf (available as optional accessory on some models) slots easily into place at a height of 200 mm from the floor. Lower shelf is compulsory to install the chest of drawers.
- Square section legs and 40 mm height-adjustable feet in 304 AISI stainless steel.
- Table top slots into legs without using screws to facilitate installation.

### Optional Accessories

- Set of 4 wheels (2 with brake) PNC 855150 ☐  
d. 100mm for tables and sinks  
(total height on wheels= 993 mm)
- Floor fastening kit for 2 square PNC 865386 ☐  
legs

**APPROVAL:** \_\_\_\_\_

**Front**

**Side**

**Top**

**Key Information:**
**External dimensions,  
Width:**
**133214 (TG500MBN)** 500 mm

**External dimensions,  
Depth:**

700 mm

**External dimensions,  
Height:**

900 mm

**Worktop thickness:**

50 mm

**Net weight:**

18 kg

**Standard Preparation  
500 mm Work Table**

The company reserves the right to make modifications to the products without prior notice. All information correct at time of printing.

2025.06.29